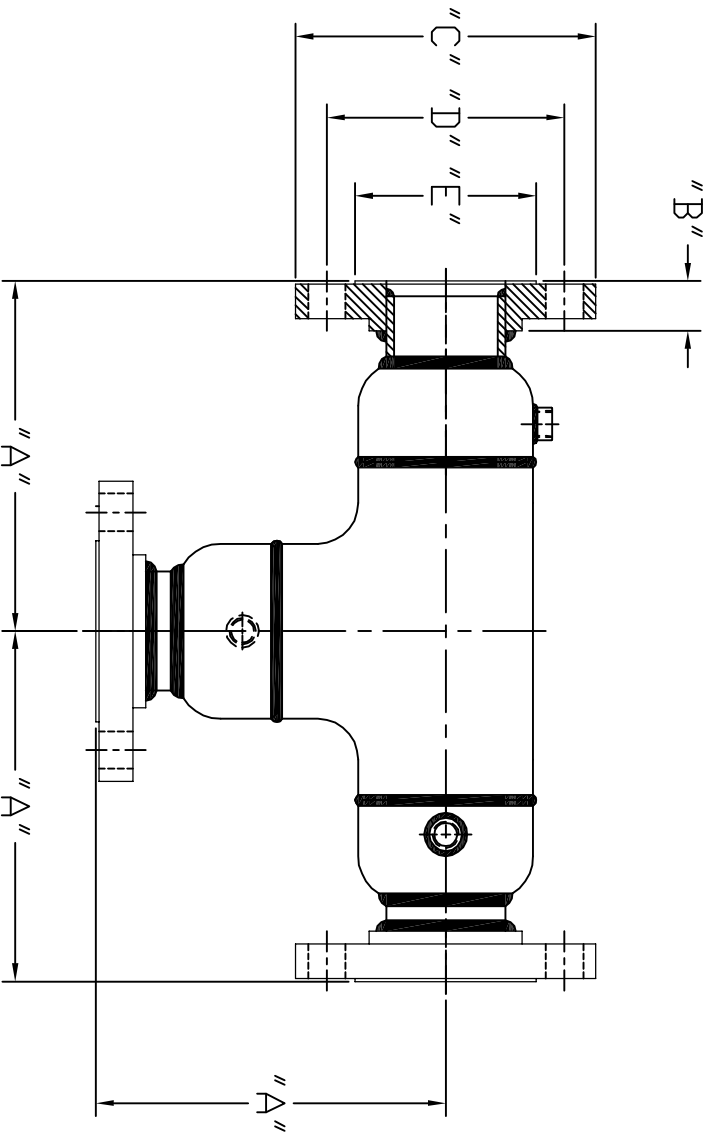


DIMENSIONS; (ALL ARE IN INCHES)



TEE SIZE (CORE)	B		C		D		E	COUPLING SIZE	ND. OF BOLT HOLES		DIA. OF BOLT HOLES	
	150#	300#	150#	300#	150#	300#			150#	300#	150#	300#
1	4	11 1/6	1 1/6	4 1/4	4 7/8	3 3/8	2	1/2	4	4	5/8	3/4
2	5	1	1 5/16	6	6 1/2	4 3/4	5	1 1/2	4	8	3/4	3/4
3	7	1 3/16	1 11/16	7 1/2	8 1/4	6	6 5/8	3/4	4	8	3/4	7/8
4	8	1 5/16	1 7/8	9	10	7 1/2	7 7/8	3/4	8	8	3/4	7/8
6	10	1 9/16	2 1/16	11	12 1/2	9 1/2	10 5/8	3/4	8	12	7/8	7/8
8	12	1 3/4	2 1/16	13 1/2	15	11 3/4	13	3/4	8	12	7/8	1
10	14	1 15/16	2 3/8	16	17 1/2	14 1/4	15 1/4	1	12	16	1	1 1/8
12	16	2 3/16	2 7/8	19	20 1/2	17	17 3/4	1	12	16	1	1 1/4

TOLERANCES  
(EXCEPT AS NOTED)

DECIMAL  
.X = ±.015  
.XX = ±.010  
.XXX = ±.005

FRACTIONAL  
± 1/64

Flextrol, Inc.  
192 Browns Hill Road  
Locust, NC 28097

TITLE  
SIZE AND DIMENSIONS/FABRICATED  
JACKETED TEE

DATE	SYM	REVISION RECORD	BY	ANGULAR	DRAWN BY
	○			+30'	ALP
					TAG NDI. CAPPED JACKETED TEE