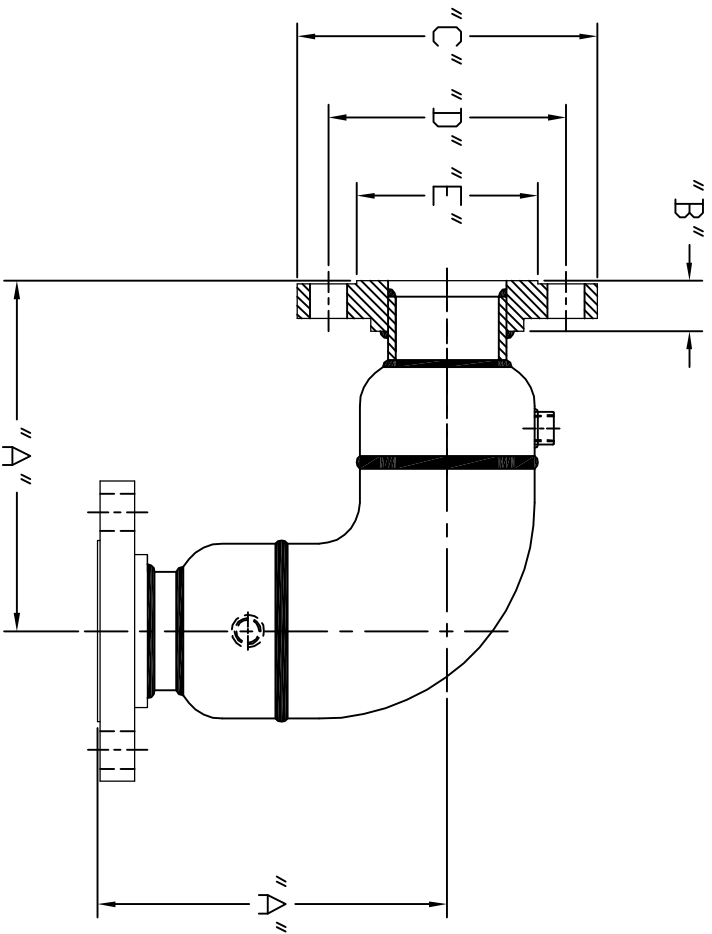


DIMENSIONS; (ALL ARE IN INCHES)



TEE SIZE (CORE)	A		B		C		D		COUPLING SIZE	NO. OF BOLT HOLES 150#	DIA. OF BOLT HOLES 150#	NO. OF BOLT HOLES 300#	DIA. OF BOLT HOLES 300#
	150#	300#	150#	300#	150#	300#	150#	300#					
1	4	1 1/6	4 1/4	4 7/8	3 1/8	3 1/2	2	1/2	4	4	4	5/8	3/4
2	5	1 1/6	5 1/6	6	4 3/4	5	3 5/8	1/2	4	4	4	3/4	3/4
3	7	1 3/6	6 1/6	7 1/2	6 1/4	6 5/8	5	3/4	4	4	4	3/4	7/8
4	8	1 5/6	7 1/8	9	7 1/2	7 7/8	6 3/6	3/4	8	8	8	3/4	7/8
6	10	1 9/6	8 1/6	11	8 1/2	8 7/8	8 1/2	3/4	8	8	8	7/8	7/8
8	12	1 3/4	9 1/6	13 1/2	10 1/2	10 5/8	10 5/8	3/4	8	8	8	7/8	1
10	14	1 5/6	10 1/6	15 1/2	11 1/2	11 3/4	11 3/4	1	12	12	12	1	1 1/8
12	16	2 1/6	11 1/6	17 1/2	12 1/2	12 3/4	12 3/4	1	12	12	12	1	1 1/4

DATE	SYM	REVISION RECORD	BY

TOLERANCES
(EXCEPT AS NOTED)
 DECIMAL
 .X = ±.015
 .XX = ±.010
 .XXX = ±.005
 FRACTIONAL
 ± 1/64

DRAWN BY ALP
 DATE 9/15/2011
 TAG NO: CAPPED JACKETED 90° ELL

Flextrol, Inc.
 192 Browns Hill Road
 Locust, NC 28097

TITLE
 SIZE AND DIMENSIONS/FABRICATED
 JACKETED 90° ELL